

# TEST REPORT

Report No.: WD2018090219EN

Date: Sep. 06, 2018

Page: 1 / 8

**Applicant:** GUANGZHOU KINGSLONG BAG&CASE CO. LIMITED

**Address:** ROOM B1, THIRD FLOOR, NO. 7 HUAYING STREET, JIAHEWANGGANG, BAIYUN DISTRICT, GUANGZHOU, CHINA. 510440

The following merchandise was (were) submitted and identified by client as:

**Sample Name:** Anti-theft Backpack  
**Sample Model:** CNS-CBP5BG9  
**Use of Sample:** Anti-theft Backpack  
**Order No.:** KSLPI1807014  
**Color:** Gray and Black  
**Manufacturer:** Guangzhou Kingslong Bag & Case CO., Limited  
**Supplier:** Guangzhou Kingslong Bag & Case CO., Limited  
**Buyer:** ASBISc Enterprises PLC  
**Sample Received Date:** Sep. 03, 2018  
**Completed Date:** Sep. 06, 2018

**Test Result(s):** Please refer to next page(s).

**Test Requested and Conclusion(s):**

No.	Test Sample	Standard and Requirement	Conclusion(s)
1	Tested materials of submitted samples	RoHS 2.0 Directive 2011/65/EU and its subsequent amendments	PASS

Edited by: *Grace Tang* Reviewed by: *phoebe Zhang* Approved by: *Andy zhu*

The results shown in this test report refer only to the sample(s) tested unless otherwise stated. This Test Report cannot be reproduced, except in full, without prior written permission of the company. The data/results in reports without an CMA stamp do not have a proven effect. Items marked with "n" means they are not accredited by CNAS, "s" means the item of subcontractor is not accredited by CNAS.



# TEST REPORT

Report No.: WD2018090219EN

Date: Sep. 06, 2018

Page: 2 / 8

## Test Result(s):

RoHS - Lead (Pb)/Cadmium(Cd)/Mercury(Hg)/Hexavalent Chromium(Cr<sup>6+</sup>)/PBBs/PBDEs

Method: With reference to IEC 62321-3-1: 2013/ IEC 62321-4&5: 2013/ IEC 62321-6: 2015/ IEC 62321-7-1: 2015/ IEC 62321-7-2:2017, analyzed by EDXRF & ICP-AES & GC-MS & UV-Vis.

Material No.	Substances	EDXRF Result *	Chemical Result #(mg/kg)	Conclusion
1	Pb	BL	--	PASS
	Cd	BL	--	PASS
	Hg	BL	--	PASS
	Cr <sup>6+</sup>	BL	--	PASS
	PBBs	BL	--	PASS
	PBDEs		--	PASS
2	Pb	BL	--	PASS
	Cd	BL	--	PASS
	Hg	BL	--	PASS
	Cr <sup>6+</sup>	BL	--	PASS
	PBBs	BL	--	PASS
	PBDEs		--	PASS
3	Pb	BL	--	PASS
	Cd	BL	--	PASS
	Hg	BL	--	PASS
	Cr <sup>6+</sup>	BL	--	PASS
	PBBs	BL	--	PASS
	PBDEs		--	PASS
4	Pb	BL	--	PASS
	Cd	BL	--	PASS
	Hg	BL	--	PASS
	Cr <sup>6+</sup>	BL	--	PASS
	PBBs	BL	--	PASS
	PBDEs		--	PASS
5	Pb	BL	--	PASS
	Cd	BL	--	PASS
	Hg	BL	--	PASS
	Cr <sup>6+</sup>	BL	--	PASS
	PBBs	BL	--	PASS
	PBDEs		--	PASS

The results shown in this test report refer only to the sample(s) tested unless otherwise stated. This Test Report cannot be reproduced, except in full, without prior written permission of the company. The data/results in reports without an CMA stamp do not have a proven effect. Items marked with "n" means they are not accredited by CNAS, "s" means the item of subcontractor is not accredited by CNAS.

**WONDER (GUANGDONG) TESTING INTERNATIONAL CO., LTD.**

No. 221 Jianshebei Road Huadu District, Guangzhou City, Guangdong Province, China, 510800  
E-mail: wd@wdwonder.com Tel: 86-020-8689 0001 Fax: 86-020-8689 6998 Website: http://www.wdwonder.com



# TEST REPORT

Report No.: WD2018090219EN

Date: Sep. 06, 2018

Page: 3 / 8

## Test Result(s):

RoHS - Lead (Pb)/Cadmium(Cd)/Mercury(Hg)/Hexavalent Chromium(Cr<sup>6+</sup>)/PBBs/PBDEs

Method: With reference to IEC 62321-3-1: 2013/ IEC 62321-4&5: 2013/ IEC 62321-6: 2015/ IEC 62321-7-1: 2015/ IEC 62321-7-2:2017, analyzed by EDXRF & ICP-AES & GC-MS & UV-Vis.

Material No.	Substances	EDXRF Result *	Chemical Result #(mg/kg)	Conclusion
6	Pb	BL	--	PASS
	Cd	BL	--	PASS
	Hg	BL	--	PASS
	Cr <sup>6+</sup>	BL	--	PASS
	PBBs	BL	--	PASS
	PBDEs		--	PASS
7	Pb	BL	--	PASS
	Cd	BL	--	PASS
	Hg	BL	--	PASS
	Cr <sup>6+</sup>	BL	--	PASS
	PBBs	BL	--	PASS
	PBDEs		--	PASS
8	Pb	BL	--	PASS
	Cd	BL	--	PASS
	Hg	BL	--	PASS
	Cr <sup>6+</sup>	BL	--	PASS
	PBBs	BL	--	PASS
	PBDEs		--	PASS
9	Pb	BL	--	PASS
	Cd	BL	--	PASS
	Hg	BL	--	PASS
	Cr <sup>6+</sup>	BL	--	PASS
	PBBs	BL	--	PASS
	PBDEs		--	PASS
10	Pb	BL	--	PASS
	Cd	BL	--	PASS
	Hg	BL	--	PASS
	Cr <sup>6+</sup>	BL	--	PASS
	PBBs	BL	--	PASS
	PBDEs		--	PASS

The results shown in this test report refer only to the sample(s) tested unless otherwise stated. This Test Report cannot be reproduced, except in full, without prior written permission of the company. The data/results in reports without an CMA stamp do not have a proven effect. Items marked with "n" means they are not accredited by CNAS, "s" means the item of subcontractor is not accredited by CNAS.

**WONDER (GUANGDONG) TESTING INTERNATIONAL CO., LTD.**

No. 221 Jianshebei Road Huadu District, Guangzhou City, Guangdong Province, China, 510800  
E-mail: wd@wdwonder.com Tel: 86-020-8689 0001 Fax: 86-020-8689 6998 Website: http://www.wdwonder.com



# TEST REPORT

Report No.: WD2018090219EN

Date: Sep. 06, 2018

Page: 4 / 8

## Test Result(s):

RoHS - Lead (Pb)/Cadmium(Cd)/Mercury(Hg)/Hexavalent Chromium(Cr<sup>6+</sup>)/PBBs/PBDEs

Method: With reference to IEC 62321-3-1: 2013/ IEC 62321-4&5: 2013/ IEC 62321-6: 2015/ IEC 62321-7-1: 2015/ IEC 62321-7-2:2017, analyzed by EDXRF & ICP-AES & GC-MS & UV-Vis.

Material No.	Substances	EDXRF Result *	Chemical Result #(mg/kg)	Conclusion
11	Pb	BL	--	PASS
	Cd	BL	--	PASS
	Hg	BL	--	PASS
	Cr <sup>6+</sup>	BL	--	PASS
	PBBs	BL	--	PASS
	PBDEs		--	PASS
12	Pb	BL	--	PASS
	Cd	BL	--	PASS
	Hg	BL	--	PASS
	Cr <sup>6+</sup>	BL	--	PASS
	PBBs	--	--	NA
	PBDEs		--	NA
13	Pb	BL	--	PASS
	Cd	BL	--	PASS
	Hg	BL	--	PASS
	Cr <sup>6+</sup>	BL	--	PASS
	PBBs	BL	--	PASS
	PBDEs		--	PASS
14	Pb	BL	--	PASS
	Cd	BL	--	PASS
	Hg	BL	--	PASS
	Cr <sup>6+</sup>	BL	--	PASS
	PBBs	BL	--	PASS
	PBDEs		--	PASS
15	Pb	BL	--	PASS
	Cd	BL	--	PASS
	Hg	BL	--	PASS
	Cr <sup>6+</sup>	BL	--	PASS
	PBBs	BL	--	PASS
	PBDEs		--	PASS

The results shown in this test report refer only to the sample(s) tested unless otherwise stated. This Test Report cannot be reproduced, except in full, without prior written permission of the company. The data/results in reports without an CMA stamp do not have a proven effect. Items marked with "n" means they are not accredited by CNAS, "s" means the item of subcontractor is not accredited by CNAS.

**WONDER (GUANGDONG) TESTING INTERNATIONAL CO., LTD.**

No. 221 Jianshebei Road Huadu District, Guangzhou City, Guangdong Province, China, 510800  
E-mail: wd@wdwonder.com Tel: 86-020-8689 0001 Fax: 86-020-8689 6998 Website: http://www.wdwonder.com



# TEST REPORT

Report No.: WD2018090219EN

Date: Sep. 06, 2018

Page: 5 / 8

- Note:**
1. mg/kg = milligram per kilogram (ppm).
  2. N.D. = Not Detected (<RL).
  3. RL(Reporting Limit): 2 mg/kg for Pb/ Cd/ Hg/ Cr<sup>6+</sup>(Nonmetal material); 5 mg/kg for PBBs & PBDEs.
  4. LOQ(limit of quantification)(Cr<sup>6+</sup>)=0.10µg/cm<sup>2</sup>.
  5. "▼"=a. when Cr(VI) in a sample is detected above 0.13 µg/cm<sup>2</sup>, the sample is considered to be **Positive** for Cr(VI).  
b. when Cr(VI) in a sample is detected below 0.10 µg/cm<sup>2</sup>, the sample is considered to be **Negative** for Cr(VI).  
c. when Cr(VI) in a sample is detected between 0.10 µg/cm<sup>2</sup> and 0.13 µg/cm<sup>2</sup>, the result was **Inconclusive**.
  6. "\*" = It is the result on total Cr and Br while test substances are Cr<sup>6+</sup> and PBBs & PBDEs.
  7. "#" = Result are obtained by EDXRF for primary screening, if the result exceeds the below limit (BL), and further chemical testing.
  8. NA=Not Applicable.
  9. "E1" = This material is copper alloy proved by client, Lead as a copper alloy containing up to 40000ppm on the requirements of RoHS Directive 2011/65/EU.

## Screening limits in mg/kg for regulated elements in various matrices

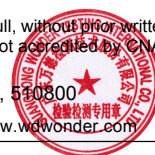
Elements	Polymer	Metal	Composite Materials
<b>Pb</b>	BL≤(700-3σ)<X<(1300+3σ)≤ OL	BL≤(700-3σ)<X<(1300+3σ)≤ OL	BL≤(500-3σ)<X<(1500+3σ)≤ OL
<b>Cd</b>	BL≤(70-3σ)<X<(130+3σ)≤ OL	BL≤(70-3σ)<X<(130+3σ)≤ OL	LOD<X<(150+3σ)≤OL
<b>Hg</b>	BL≤(700-3σ)<X<(1300+3σ)≤ OL	BL≤(700-3σ)<X<(1300+3σ)≤ OL	BL≤(500-3σ)<X<(1500+3σ)≤ OL
<b>Cr</b>	BL≤(700-3σ)<X	BL≤(700-3σ)<X	BL≤(500-3σ)<X
<b>Br</b>	BL≤(300-3σ)<X	--	BL≤(250-3σ)<X

BL = Below Limit, OL = Over Limit, IN = Inconclusive, LOD = Limit of Detection

The results shown in this test report refer only to the sample(s) tested unless otherwise stated. This Test Report cannot be reproduced, except in full, without prior written permission of the company. The data/results in reports without an CMA stamp do not have a proven effect. Items marked with "n" means they are not accredited by CNAS, "s" means the item of subcontractor is not accredited by CNAS.

**WONDER (GUANGDONG) TESTING INTERNATIONAL CO., LTD.**

No. 221 Jianshebei Road Huadu District, Guangzhou City, Guangdong Province, China, 510800  
E-mail: wd@wdwonder.com Tel: 86-020-8689 0001 Fax: 86-020-8689 6998 Website: http://www.wdwonder.com





# TEST REPORT

Report No.: WD2018090219EN

Date: Sep. 06, 2018

Page: 6 / 8

**Test Material List**

The following materials apply only to the samples submitted for chemical testing

Material No.	Description	Location
1	Dark gray foam	Lining
2	Blue mesh cloth	Lining
3	White foam	Lining
4	White non woven cloth	Lining
5	Black plastic	Zipper teeth
6	Black fabric	Zipper cloth
7	Dark blue plastic	Zipper teeth
8	Dark blue fabric	Zipper cloth
9	Black fabric with silver printing	Braid belt
10	Beige foam	Lining
11	Gray/blue soft plastic	Zipper puller
12	Silvery metal	Zipper puller
13	Black soft plastic	Cover
14	Black plastic	Adjustment buckle
15	Black plastic	Button

**Photo of Sample:**

The results shown in this test report refer only to the sample(s) tested unless otherwise stated. This Test Report cannot be reproduced, except in full, without prior written permission of the company. The data/results in reports without an CMA stamp do not have a proven effect. Items marked with "n" means they are not accredited by CNAS, "s" means the item of subcontractor is not accredited by CNAS.

**WONDER (GUANGDONG) TESTING  
INTERNATIONAL CO., LTD.**No. 221 Jianshebei Road Huadu District, Guangzhou City, Guangdong Province, China, 510800  
E-mail: wd@wdwonder.com Tel: 86-020-8689 0001 Fax: 86-020-8689 6998 Website: <http://www.wdwonder.com>

# TEST REPORT

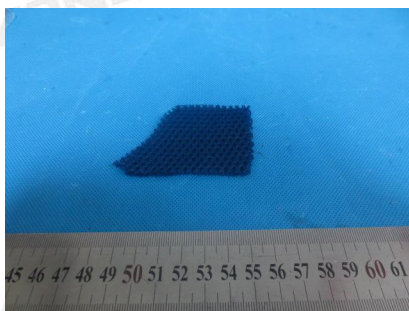
Report No.: WD2018090219EN

Date: Sep. 06, 2018

Page: 7 / 8



1



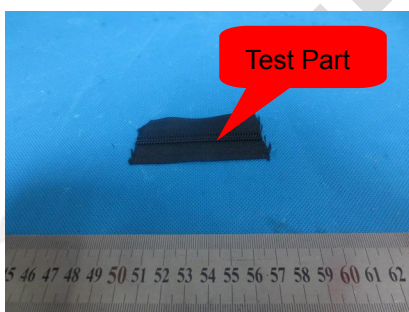
2



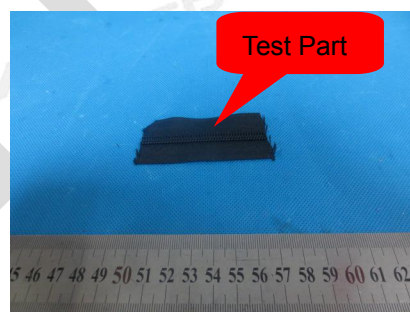
3



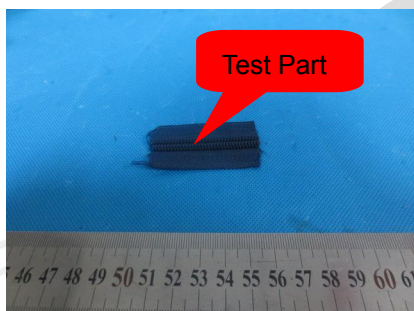
4



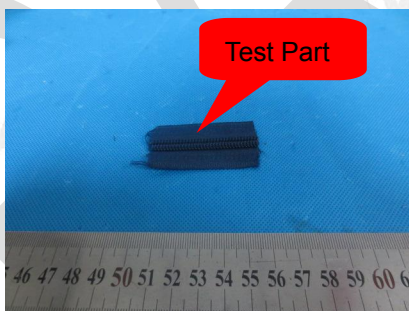
5



6



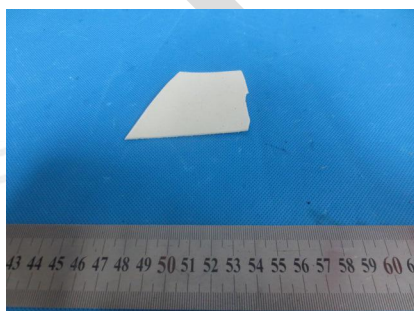
7



8



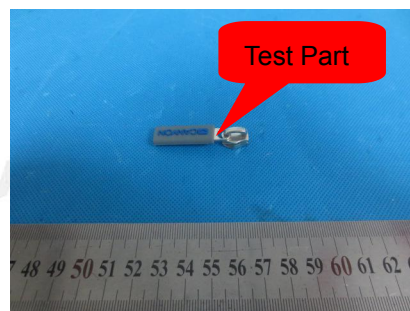
9



10



11

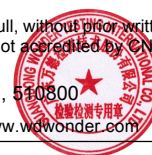


12

The results shown in this test report refer only to the sample(s) tested unless otherwise stated. This Test Report cannot be reproduced, except in full, without prior written permission of the company. The data/results in reports without an CMA stamp do not have a proven effect. Items marked with "n" means they are not accredited by CNAS, "s" means the item of subcontractor is not accredited by CNAS.

**WONDER (GUANGDONG) TESTING  
INTERNATIONAL CO., LTD.**

No. 221 Jianshebei Road Huadu District, Guangzhou City, Guangdong Province, China, 510800  
E-mail: wd@wdwonder.com Tel: 86-020-8689 0001 Fax: 86-020-8689 6998 Website: <http://www.wdwonder.com>



# TEST REPORT

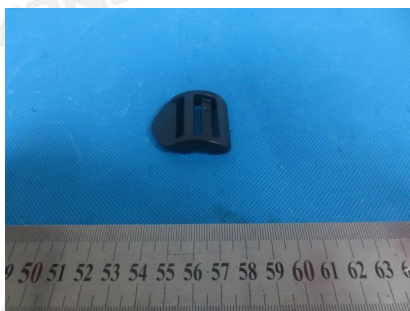
Report No.: WD2018090219EN

Date: Sep. 06, 2018

Page: 8 / 8



13



14



15

\*\*\*End of Report\*\*\*

The results shown in this test report refer only to the sample(s) tested unless otherwise stated. This Test Report cannot be reproduced, except in full, without prior written permission of the company. The data/results in reports without an CMA stamp do not have a proven effect. Items marked with "n" means they are not accredited by CNAS, "s" means the item of subcontractor is not accredited by CNAS.

**WONDER (GUANGDONG) TESTING  
INTERNATIONAL CO., LTD.**

No. 221 Jianshebei Road Huadu District, Guangzhou City, Guangdong Province, China, 510800  
E-mail: wd@wdwonder.com Tel: 86-020-8689 0001 Fax: 86-020-8689 6998 Website: <http://www.wdwonder.com>

